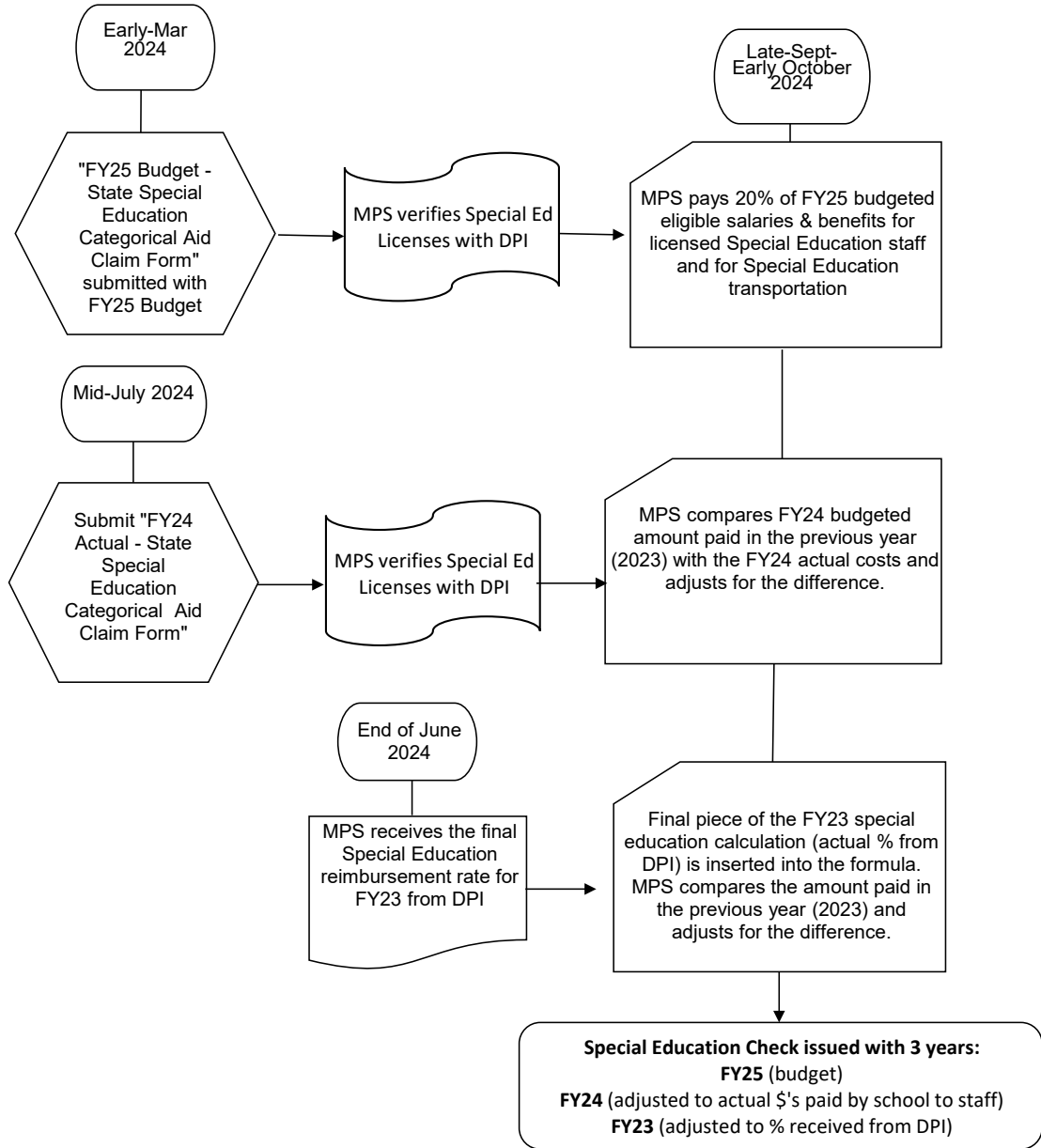




FY25 SPECIAL EDUCATION COST CLAIM AND REIMBURSEMENTS PROCESS



Visit MPS Homepage for Non-instrumentality Charter Schools to retrieve a copy of the "FY25 Budget - 2024-2025 State Special Education Categorical Aid Claim Form with instructions" to complete.

E-mail special education claim forms in excel format to Tangela Anderson at anderst6@milwaukee.k12.wi.us and cc Michele Wilborn at wilbormk@milwaukee.k12.wi.us.

Note: If forms are not received on time, no 2025 payment will be made until the following year.