

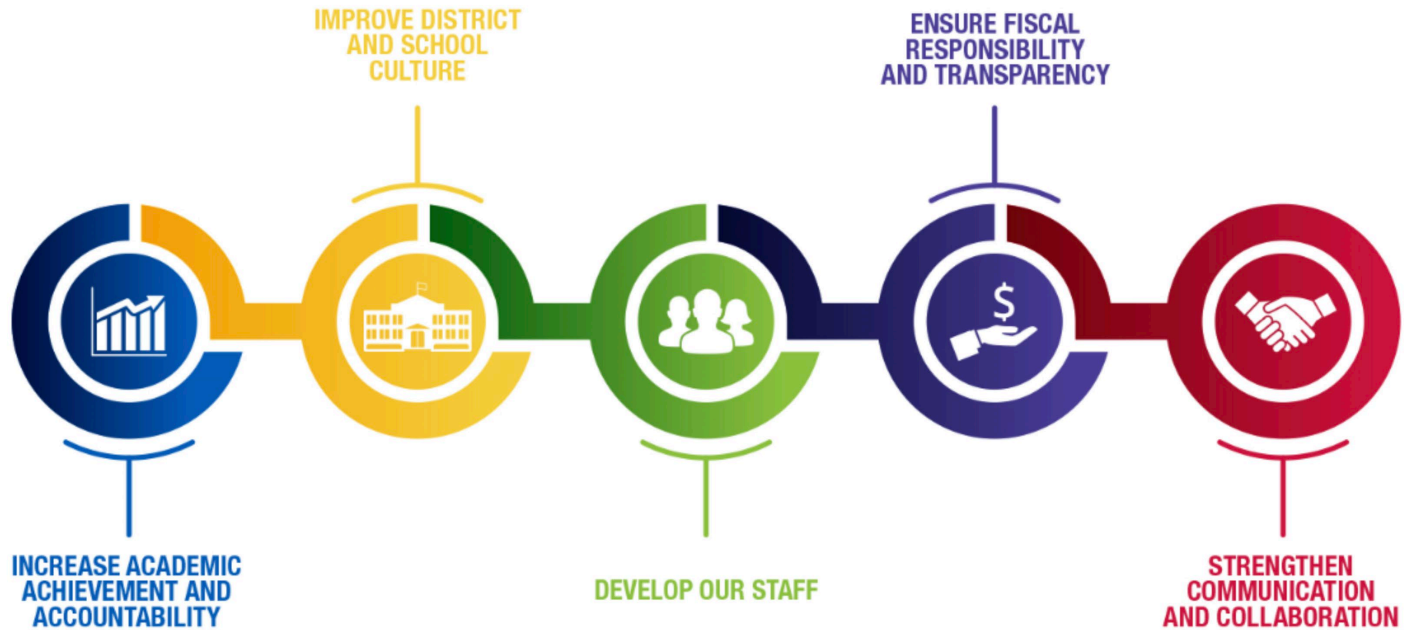
ESSER III Community Engagement

July 2021



MILWAUKEE
PUBLIC SCHOOLS

Five Priorities for Success



Elementary and Secondary School Emergency Relief (ESSER) Programs

ESSER Grant Overview	ESSER I	ESSER II	ESSER III
Stimulus bill	Coronavirus Aid, Relief, and Economic Security Act (CARES Act)	Coronavirus Response and Relief Supplemental Appropriations Act (CRRSAA)	American Rescue Plan Act (ARPA)
Performance period	3/13/2020 – 9/30/2022	3/13/2020 – 9/30/2023	3/13/2020 – 9/30/2024
Total amount in grants to Milwaukee Public Schools	\$41 million	\$225 million	\$506 million – Districts must reserve 20% to mitigate learning loss
School districts provide private school services	Yes; \$15 million	N/A	N/A



ESSER I Spending

ESSER I Spending	
Description	Amount
Professional development	\$ 14,635
COVID testing	215,522
COVID information for families and staff	7,264
Personal protective equipment (PPE) and sanitizing	3,463,512
Facilities - air quality	3,853,537
Technology	24,681,721
Indirect cost	4,266,797
Contracted schools	4,862,676
	\$ 41,365,663



Proposed ESSER Funding	ESSER II	ESSER III	Total
Accelerating Learning			
Direct Educational Services	\$11,112,840	\$12,646,200	\$23,759,040
High Quality Materials	\$44,552,208	\$9,093,240	\$53,645,448
Professional Development	\$8,257,855	\$9,706,538	\$17,964,393
Total Accelerating Learning	\$63,922,903	\$31,445,978	\$95,368,881
Health and Wellness			
Mental Health	\$7,902,047	\$13,584,674	\$21,486,721
COVID-19 and Health Related	\$2,447,035	\$10,010,210	\$12,457,245
Social Emotional Learning	\$10,561,833	\$9,867,096	\$20,428,929
Physical Education and Experiential Learning	\$3,631,038	\$2,115,315	\$5,746,353
Total Health and Wellness	\$24,541,953	\$35,577,295	\$60,119,248
Facilities			
Air Quality	\$108,174,720	\$75,419,440	\$183,594,160
Plumbing	\$0	\$5,500,000	\$5,500,000
Electrical	\$890,000	\$707,000	\$1,597,000
Interior	\$0	\$8,520,000	\$8,520,000
Total Facilities	\$109,064,720	\$90,146,440	\$199,211,160
Other Educational Services and Programs			
Other Educational Services and Programs	\$27,683,823		\$27,683,823
Grand Total	\$225,213,399	\$157,169,713	\$382,383,112

ESSER III Plan Development

Planning Team

- District administrators
- School leaders
- Teachers
- Parents/guardians



ESSER III Plan Development

Proposed Priority Areas

- Accelerating Learning
- Health and Wellness
- Facilities
- Technology
- Extracurricular Engagement



ESSER III Plan Development

Accelerating Learning

- Direct educational services
- High quality instructional materials
- Professional development
- Strengthening parent/family engagement



ESSER III Plan Development

Health and Wellness

- Mental health
- Physical health
- Social emotional learning
- Physical education and experiential learning



ESSER III Plan Development

Facilities

- Air quality
- Bottle filling station installations
- Interior finishes
- Building modifications/additions



ESSER III Plan Development

Technology

- Equipment to support student learning
- Instructional technology software
- Accessibility to technology and support
- Instructional technology professional development



ESSER III Plan Development

Extracurricular Engagement

- Clubs
- Athletics (team sports, sports physicals, facilities)
- Child care
- Afterschool supports



ESSER III Plan Development

More Information

<http://mpsmke.com/esser>



Thank you.



Dr. Keith P. Posley, *Superintendent*