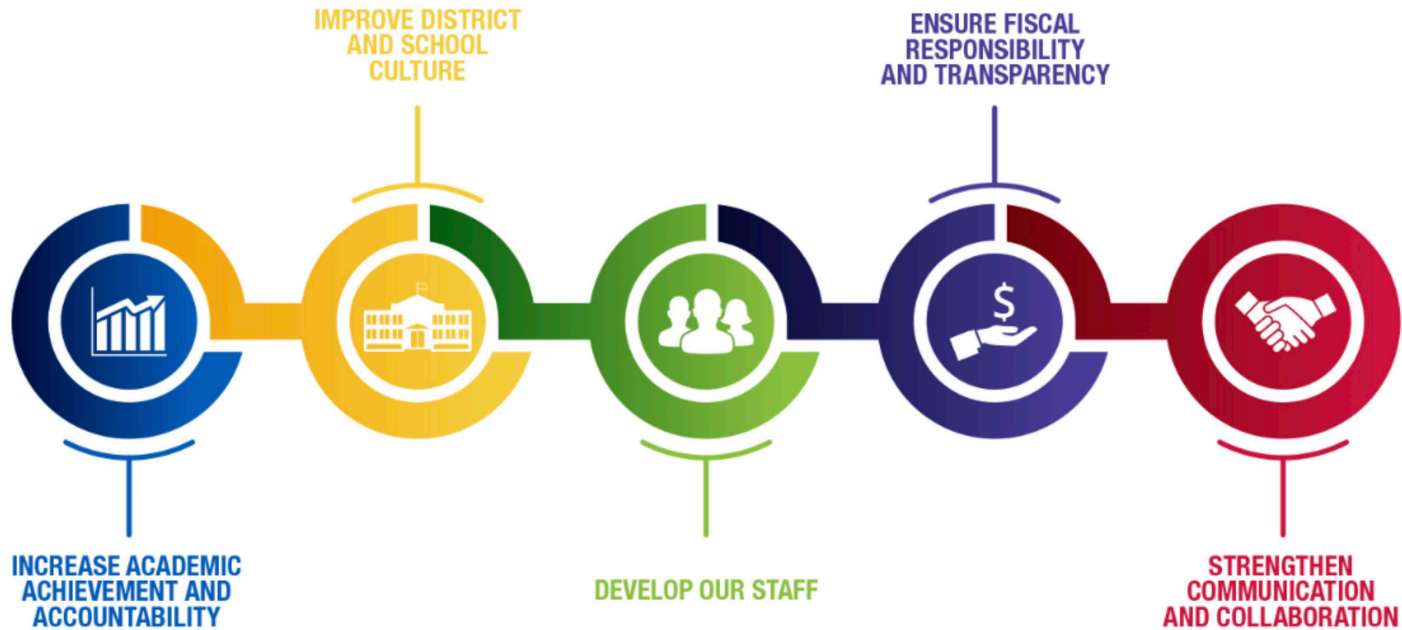




w>t&h'd.,J>rHRvXw>rRuJxD.vd.xD.t*D>



wDRzk.uFd'D;wDRxDuFd*h>*D>tlw>wdpXRrRpXR (ESSER)

w>wdmusJRwz.

ESSER phwdmymw>uG>u'guh R	ESSER I	ESSER II	ESSER III
phvXtxd.[;xd.*JRxD.w>A (Stimulus bill)	cd.&d.e.bJ&X;(p)w>wd pXR pXRrRpXR<Aw>wdpXRr RpXR<A'D; rk>usdROJRuGmw>bH. w>bXw> od.w>oD (Security Act (CARES Act))	cd.&d.e.bJ&X;(p)w>cDqX'D; w>wd p>RrRpXRw>rRySJRxD.pXR w>-uX;OJ b.OJw>od.w>oD (CRRSAA)	ySRtrJ&uRw>rRylRzsJ;w>wd musJR oJp;w>od.w>oDA(ARPA)
w>zH;w>rRtuwD>	3/13/2020 – 9/30/2022	3/13/2020 – 9/30/2023	3/13/2020 – 9/30/2024
phcJvXmymzSd.vXphwdm ymtylR qlAMilwaukee ursX>uFdwz. tylR	\$41 uuGJ>	\$225 uuGJ>	\$506 uuGJ> – uD>&h.uFdvD>uODR ub.yXRCm 20% vXurRudn> xD. w>rRvdrR'd:w>yDRr>
uFdvD>uODR[h.vDR	rh>A\$15 uuGJ>	wb.xGJ	wb.xGJ



ESSER I w>olusd.olph

w>ymzsgxD.

phymzSd.

w>rR'd.xD.xDxD.ySRohySRb.pJ.eDR (Professional development)

\$ 14,635

COVID w>rRuG>

215,522

COVID w>*h>w>usdRvX[H.zdCDzd'D;ySRrRw>zdwz.t*D>

7,264

w>'Do'XeD>up>w>yD;w>vDA(PPE) 'D;w>uqSJUqSD

3,463,512

w>ol.xD.wz.A=AuvHRtuH>tpD

3,853,537

pJ;zDu[.yDng

24,681,721

w>tyORvXw>ymyeD.tDRwohA(Indirect cost)

4,266,797

uFdvXtrRw>tX.vDRvHmCH;CmA(Contracted schools)

4,862,676

cJvXmymzSd.

\$ 41,365,663

ESSER usd.phw>rRpXRA(vXuuGJ>tylR)	ESSER II	ESSER III	cJvXmymzSd.
w>rRcVxD.w>rRvdrR'd;t,lm			
w>ul.b.ul.ohvdRvdRw>rRpXRwz.f	\$11.1	\$12.6	\$23.8
w>yD;w>vDtuH>tpDtywD>xDwz.	\$44.6	\$9.1	\$53.6
w>rR'd.xD.xDxD.ySRohySRb.pJ.eDR	\$8.3	\$9.7	\$18.0
w>rRcVxD.w>rRvdrR'd;tyORcJvXmymzSd.	\$63.9	\$31.4	\$95.4
w>td.ql.td.cV'D;w>td.bD.td.nD			
cd.Elm'D;o;tw>qdurd.w>td.ql.td.cV	\$7.9	\$13.6	\$21.5
COVID-19 'D;w>b.xGJ'D;w>td.ql.td.cV	\$2.4	\$10.0	\$12.5
ySR*h>0Do;tw>wl>b.w>rRvdrR'd;	\$10.6	\$9.9	\$20.4
eD>cdrd>yS>w>[l;w>*JRw>rRvd'D;w>CkxH.oh.ngw>rRvdrR'd;	\$3.6	\$2.1	\$5.7
w>td.ql.td.cV'D;w>td.bD.td.nDtyORcJvXmymzSd.	\$24.5	\$35.6	\$60.1

ESSER Ausd.phw>rRpXRydmxGJ (vXuuGJ>tylR)	ESSER II	ESSER III	Total
w>ol.xD.wz.			
uvHRtuH>tpD	\$108.2	\$75.4	\$183.6
w>usJRxHw>zH;w>rR	\$0	\$5.5	\$5.5
vDrh.tl	\$0.9	\$0.7	\$1.6
w>ol.xD.tylR	\$0	\$8.5	\$8.5
w>ol.xD.tyORcJvXmymzSd.	\$109.1	\$90.1	\$199.2
w>ul.b.ul.ohw>rRpXR'D;w>wdmusJRt*Rwz.	\$27.7		\$27.7
ymzSd.cJvXm	\$225.2	\$157.2	\$382.4

ESSER III

w>wdmusJRu%l>

- uD>&h.uFdvD>u0DRySRyXqSX&J.usJRw>wz.
- uFdcd.e>wz.
- uFdo&.wz.
- rd>y>§ySRuG>xGJw>wz.

ESSER III

w>qSXEkmvD>u0DRvXt&h'd.wz.

- w>rRcVxD.w>rRvdrR'd;t,lm
- w>td.ql.td.cV'D;w>td.bD.td.nD
- w>ol.xD.wz.
- pJ;zDu[.yDng
- w>bs;pJvXwDR'X;tcsX



ESSER III

w>td.ql.td.cV'D;w>td.bD.td.nDwz.

- cd.Elm'D;o;tw>qdurd.w>td.ql.td.cV
- eD>cdrd>yS>w>td.ql.td.cV
- ySR*h>0Do;tw>wl>b.w>rRvdrR'd;
- eD>cdw>[l;w>*JRw>rRvd'D;w>CkxH.oh.ngw>rRvdrR'd;



ESSER III

w>ol.xD.wz.

- uvHRtuH>tpD
- w>xDxD.rRySJRyvDoM
- w>rRySJRw>ol.xD.tylRwz.
- w>bSD*hRxD.w>ol.xD.wz.§w>bSDtgxD.w>ol.xD
.WZ.

ESSER III

wpj;zdun[.yDng
w>od.vdcD.zFLxX.'GJylRw>ohw>b.tusdRtusJ
w>rReh>w>ohw>b.tusdRtusJyDng'D;w>qD.xGJ
rRpXR

- w>yD;w>vDvXuqD.xGJrRpXRySRuFdzdw>rRvdr
R'd;
- w>od.vdcD.zFLxX.'GJylRw>ohw>b.tusdRtusJ
- w>rReh>w>ohw>b.tusdRtusJyDng'D;w>qD.xGJ
rRpXR

 w>od.vdw>ohw>b.tusdRtusJyDng

ESSER III

w>bs;pJvXwDR'X;tcsX
w>wvdmuGJA(u%l>w>vdmuGJwz.<Aw>*JRvdmuGJv
Xw>rR*hRxD.eD>cdrd>yS>
wz.t*D><Aw>*JRvdmuGJw>ol.xD.w>yD;w>vDwz.)

- csX;(b)
- w>*JRvdmuGJA(u%l>w>vdmuGJwz.<Aw>*JRvdmuGJv
Xw>rR*hRxD.eD>cdrd>yS>
wz.t*D><Aw>*JRvdmuGJw>ol.xD.w>yD;w>vDwz.)
- w>uG>xGJzdo.
- uFd0HRtvD>cHw>qD.xGJrRpXR



ESSER III

w>rRM>tgxD.w>*h>w>usdR'D;w>[h.ul.wz.

ySm,JRoMvXurRM>tgxD.w>*h>w>usdRA=
<http://mpsmke.com/esser3>

0Ho;plRcDqXw>orHxHA=
<http://mpsmke.com/mpsinput>



u%l>w>wX.yD.oud;

1. ySRuFdzdvd.b.w>rEkRttguwX>vJ.l

2. w>'db.rEkRutd.'D;w>[h.ul.vXw>qSXEk
m wz.tHRvJ. /b.rEkRtCdw>oh.wz.tHRt&h'd.vJ.

u%l>w>wX.yD.oud;

- ySRvXtrRpXRrRb.vdmw>
- ySRvXtuG>eD.w>qXuWD>
- ySRvXtrReD.rRCgw>

w>bsK;l



Dr. Keith P. Posley, ySRyXqSX&J.usJRuFdwz.

