

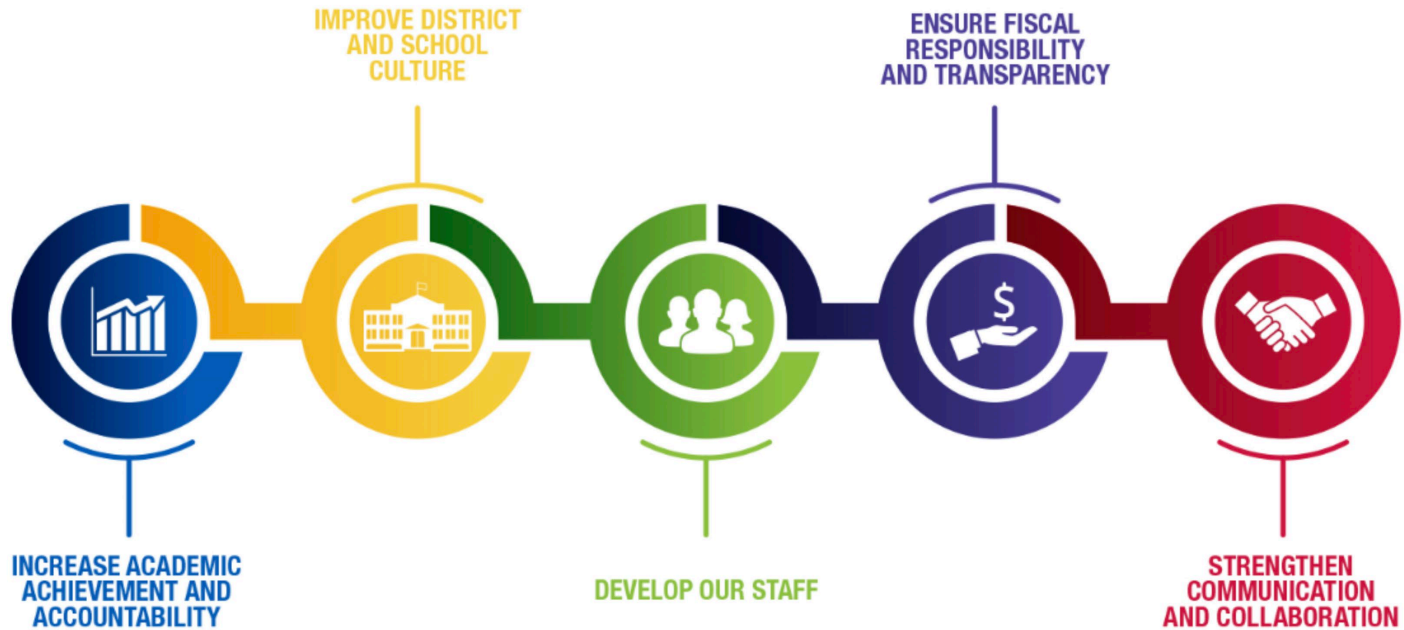
# ESSER III Community Engagement

July 2021



MILWAUKEE  
PUBLIC SCHOOLS

# Five Priorities for Success



# Elementary and Secondary School Emergency Relief (ESSER) Programs

ESSER Grant Overview	ESSER I	ESSER II	ESSER III
Stimulus bill	Coronavirus Aid, Relief, and Economic Security Act (CARES Act)	Coronavirus Response and Relief Supplemental Appropriations Act (CRRSAA)	American Rescue Plan Act (ARPA)
Performance period	3/13/2020 – 9/30/2022	3/13/2020 – 9/30/2023	3/13/2020 – 9/30/2024
Total amount in grants to Milwaukee Public Schools	\$41 million	\$225 million	\$506 million – Districts must reserve 20% to mitigate learning loss
School districts provide private school services	Yes; \$15 million	N/A	N/A



## ESSER I Spending

### Description

### Amount

Professional development

\$ 14,635

COVID testing

215,522

COVID information for families and staff

7,264

Personal protective equipment (PPE) and sanitizing

3,463,512

Facilities - air quality

3,853,537

Technology

24,681,721

Indirect cost

4,266,797

Contracted schools

4,862,676

**Total**

**\$ 41,365,663**

ESSER Funding (in millions)	ESSER II	ESSER III	Total
<b>Accelerating Learning</b>			
Direct Educational Services	\$11.1	\$12.6	\$23.8
High Quality Materials	\$44.6	\$9.1	\$53.6
Professional Development	\$8.3	\$9.7	\$18.0
<b>Total Accelerating Learning</b>	<b>\$63.9</b>	<b>\$31.4</b>	<b>\$95.4</b>
<b>Health and Wellness</b>			
Mental Health	\$7.9	\$13.6	\$21.5
COVID-19 and Health Related	\$2.4	\$10.0	\$12.5
Social Emotional Learning	\$10.6	\$9.9	\$20.4
Physical Education and Experiential Learning	\$3.6	\$2.1	\$5.7
<b>Total Health and Wellness</b>	<b>\$24.5</b>	<b>\$35.6</b>	<b>\$60.1</b>

<b>ESSER Funding Continued</b> (in millions)	<b>ESSER II</b>	<b>ESSER III</b>	<b>Total</b>
<b>Facilities</b>			
Air Quality	\$108.2	\$75.4	\$183.6
Plumbing	\$0	\$5.5	\$5.5
Electrical	\$0.9	\$0.7	\$1.6
Interior	\$0	\$8.5	\$8.5
<b>Total Facilities</b>	<b>\$109.1</b>	<b>\$90.1</b>	<b>\$199.2</b>
Other Educational Services and Programs	\$27.7		\$27.7
<b>Grand Total</b>	<b>\$225.2</b>	<b>\$157.2</b>	<b>\$382.4</b>

# ESSER III Plan Development

## Planning Team

- District administrators
- School leaders
- Teachers
- Parents/guardians



# ESSER III Plan Development

## Proposed Priority Areas

- Accelerating Learning
- Health and Wellness
- Facilities
- Technology
- Extracurricular Engagement





# ESSER III Plan Development

## Accelerating Learning

- Direct educational services
- High quality instructional materials
- Professional development
- Strengthening parent/family engagement



# ESSER III Plan Development

## Health and Wellness

- Mental health
- Physical health
- Social emotional learning
- Physical education and experiential learning



# ESSER III Plan Development

## Facilities

- Air quality
- Bottle filling station installations
- Interior finishes
- Building modifications/additions



# ESSER III Plan Development

## Technology

- Equipment to support student learning
- Instructional technology software
- Accessibility to technology and support
- Instructional technology professional development



# ESSER III Plan Development

## Extracurricular Engagement

- Clubs
- Athletics (team sports, sports physicals, facilities)
- Child care
- Afterschool supports



# ESSER III Plan Development

## More Information and Input

Website for more information:

<http://mpsmke.com/esser3>

Please respond to the survey:

<http://mpsmke.com/mpsinput>



# Group Discussion

---

1. What do students need the most?
2. What will the impact be of these proposed suggestions/why are these important



# Group Discussion

---

- Facilitator
- Timekeeper
- Notetaker





# Thank you.



Dr. Keith P. Posley, *Superintendent*